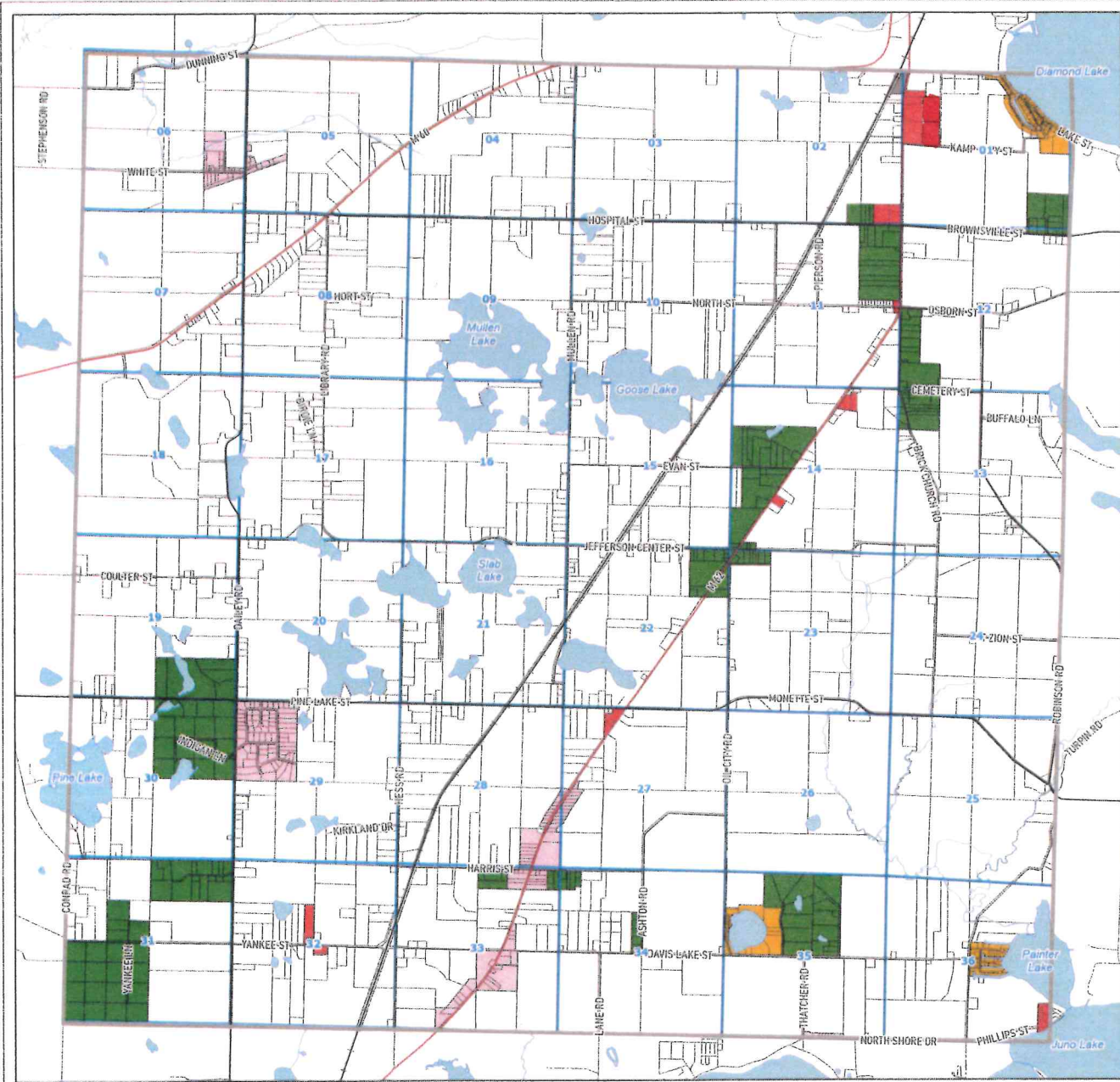


Jefferson Township Zoning Map

This is to certify that this is the official Zoning Map of Jefferson Township Zoning Ordinance adopted on the 14th day of March, 2024.

Dean Hass, Supervisor

Jenny Brunner, Township Clerk

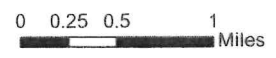


Zoning

- A-1 Agricultural District
- R-R Rural Residential District
- R-1 Low Density Residential District
- R-2 High Density Residential District
- R-3 High Density Lakefront Residential District
- R-MF Multiple Family Residential District
- R-MHC Manufactured Housing Community District
- C-1 General Commercial District
- C-2 Local Commercial District
- I-1 Light Industrial District
- PUD PUD Planned Unit Development District
- LSESOD LSESOD Large Solar Energy Overlay District
See Section 3.7 of the Zoning Ordinance for LSESOD District boundaries

Roads

- STATE TRUNKLINE
- COUNTY PRIMARY
- COUNTY LOCAL
- CITY/VILLAGE LOCAL
- PRIVATE
- NOT DEFINED



Scale: 1" = 3,300'
 Author: Cass County GIS
 Date: 2024

Information contained herein is provided for reference purposes only and should be confirmed with the appropriate local agency. Cass County assumes no responsibility for errors and/or omissions.